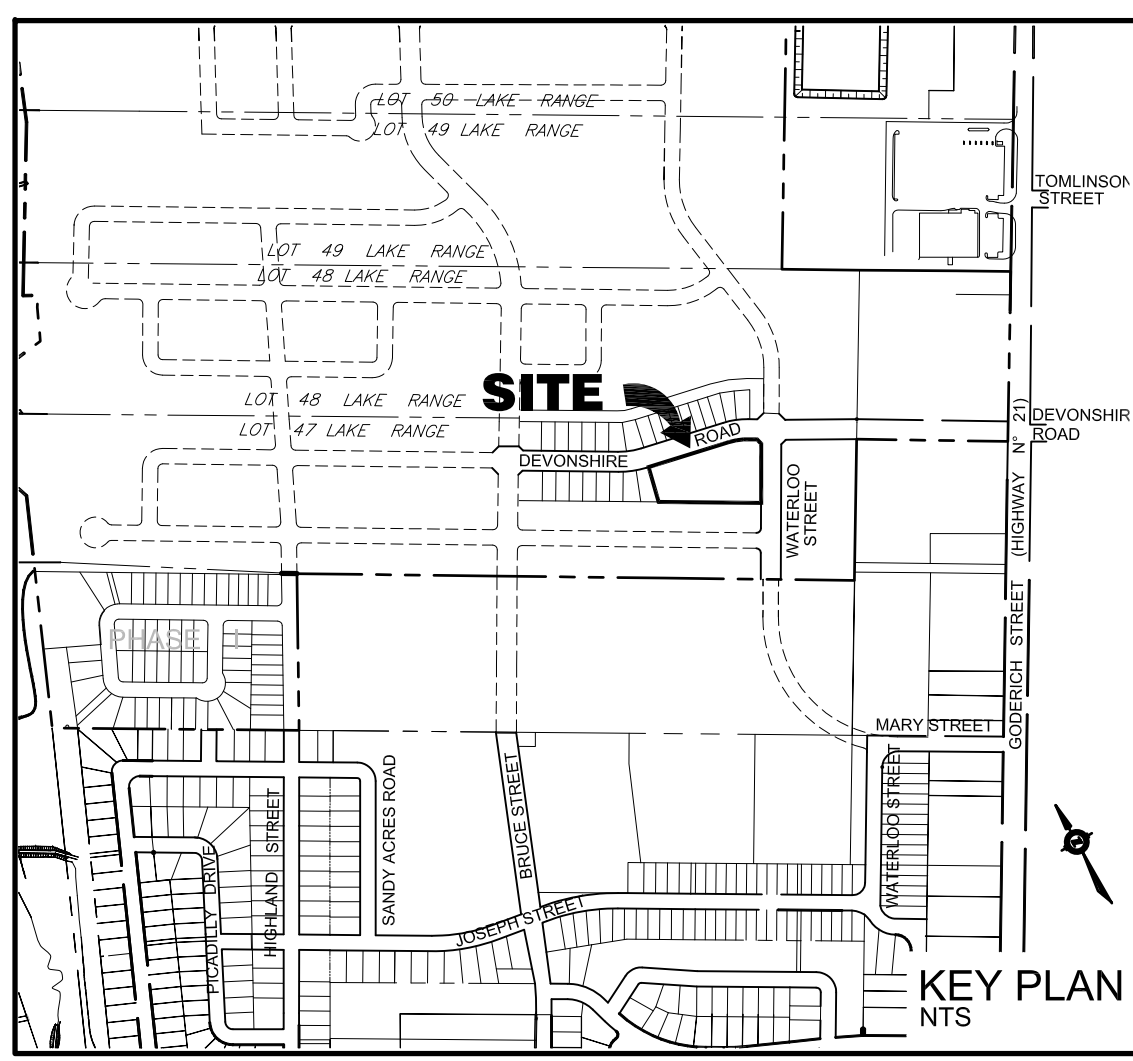
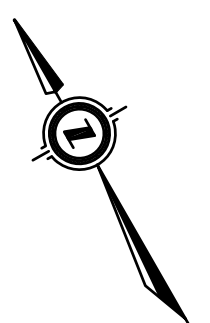
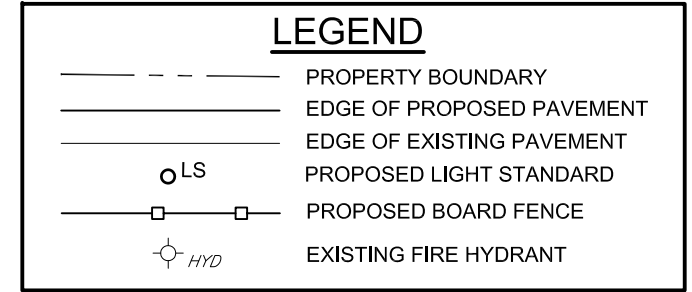


M:\Snyder\00204_Snyder_Townhouses_Summerside Phase 3 Drawings\Submissions\2017-09-11_SPT_Secnd_Sub_to_B_Snyder\00204_Multi-Family_Development\Reference_SPT.dwg Sep 11, 2017 - 9:47am



CAUTION:
THE POSITION OF POLE LINES, CONDUITS, WATERMANS, SEWERS AND OTHER UNDERGROUND AND OVERGROUND UTILITIES AND STRUCTURES IS NOT NECESSARILY SHOWN ON THE DRAWINGS. AND, WHERE SHOWN, THE ACCURACY OF THE POSITION OF SUCH UTILITIES AND STRUCTURES IS NOT GUARANTEED. BEFORE STARTING WORK, THE CONTRACTOR SHALL INFORM HIMSELF OF THE EXACT LOCATION OF ALL SUCH UTILITIES AND STRUCTURES, AND SHALL ASSUME ALL LIABILITY FOR DAMAGE TO THEM.

Notes
1. PROPERTY BOUNDARY DERIVED FROM INFORMATION SHOWN ON REGISTERED PLAN No. 3M-235.



Benchmark Information

 TOP OF SIB LOCATED AT SOUTHWEST CORNER OF INTERSECTION OF DEVONSHIRE ROAD AND GODERICH STREET.
 ELEVATION 201.66m

No.	DATE	DESCRIPTION	BY	APPD
1	SEP 6/17	SECOND SUBMISSION	TLB	SJC
0	JUL 14/17	FIRST SUBMISSION	TLB	SJC
REVISION / ISSUE				

Seal not valid unless signed and dated

464A - 10th STREET, Hanover, Ontario N4N 1R1
 Telephone: (519) 506-5959
 www.cobideeng.com

Title: PROPOSED TOWNHOUSE DEVELOPMENT
 BLOCK 28 REG'D PLAN 3M-235
 SUMMERSIDE PH 2
 Town of Sauguen Shores, Ontario
 DEVELOPMENT SITE PLAN

Client: SNYDER DEVELOPMENT CORPORATION INC.
Design: TLB **Scale:** 1:300
Drawn: JAF **Approved:**
Checked: SJC
Date: FEB 2017 **Design Engineer**
DRAWING No. 00204-SP1