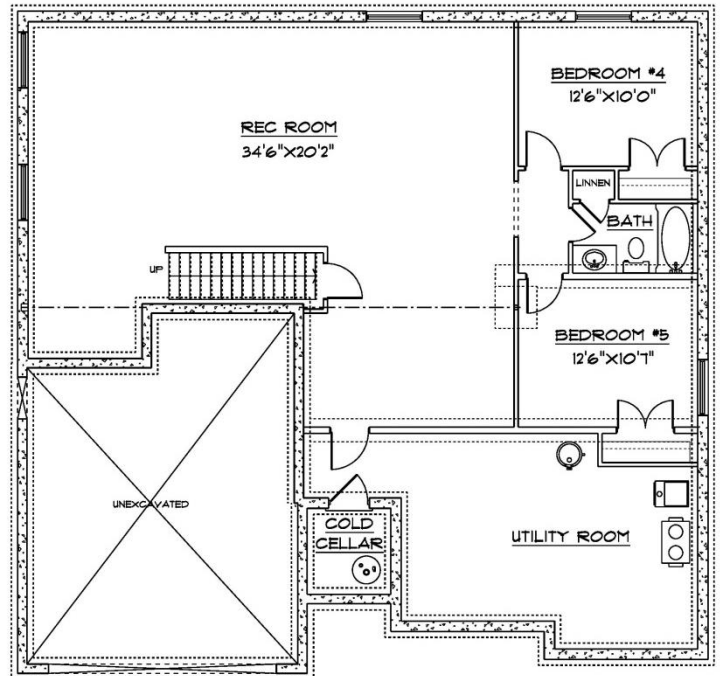
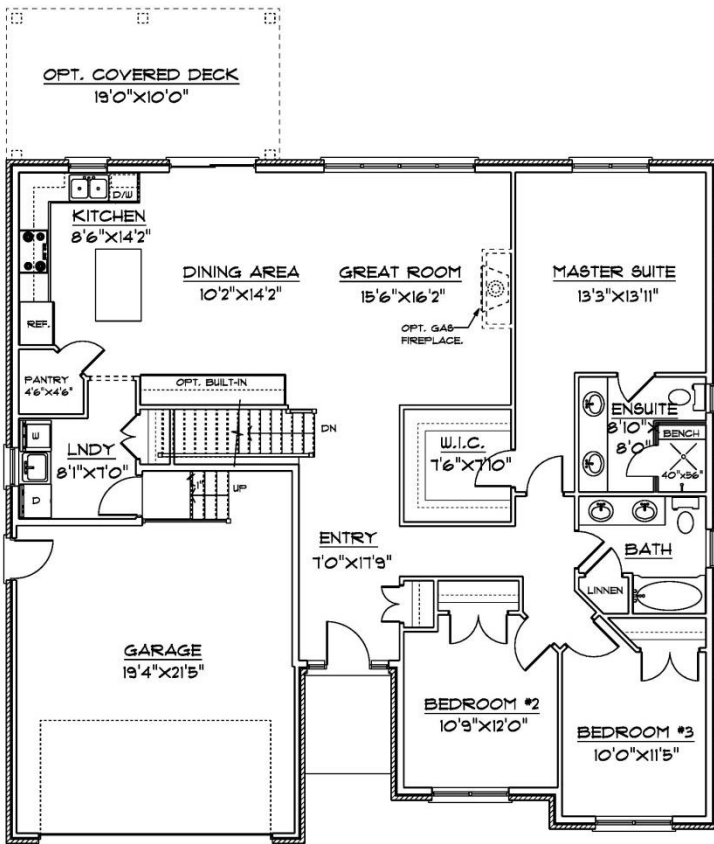




## PLAN # B2019-9

### FEATURES

SQUARE FOOTAGE	1 747 SQ. FT.
WIDTH	49'-8"
DEPTH	47'-6"
BEDROOMS	3
BATHROOMS	2



OPTIONAL FINISHED BASEMENT  
1 385 SQ. FT.

MAIN FLOOR  
1 747 SQ. FT.

